

Lightning Protection Anchor, Carbon steel, zinc plated

BLS M8-14BS85



Threaded stud with hex nut and washer
Material: Grade 8.8 Carbon steel, zinc plated and blue passivated

Type	Order code	Thread Size	Ø x Depth of Drilled Hole	Total Length	Weight	Box Quantity
		[mm]	[mm]	[mm]	[kg/100 pcs]	[pcs]
BLS M8-14BS85	BLS0814BS085	M8	14 x 40 to 60	85	7.2	25

Custom lengths available on request.

Lightning Protection Anchor, A4 stainless steel

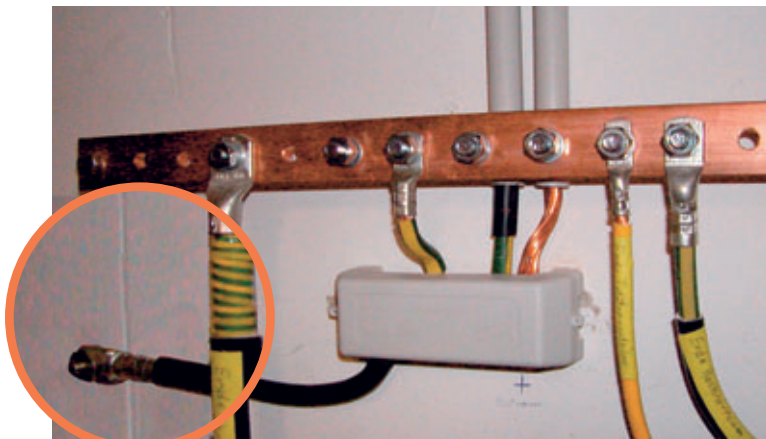
BLS M8-14BS85 A4



Threaded stud with hex nut and washer
Material: A4 stainless steel

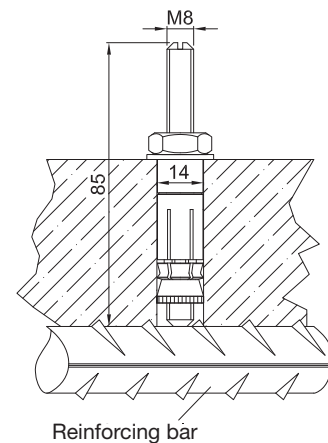
Type	Order code	Thread Size	Ø x Depth of Drilled Hole	Total Length	Weight	Box Quantity
		[mm]	[mm]	[mm]	[kg/100 pcs]	[pcs]
BLS M8-14BS85 A4	BLS0814BS085A4	M8	14 x 40 to 60	85	7.2	25

Custom lengths available on request.

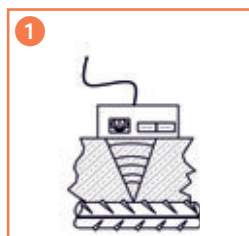


Retrofitted grounding systems connected to reinforcing bars with the LIEBIG **LIGHTNING PROTECTION ANCHOR**.

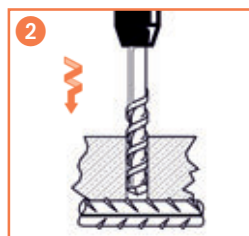
Installed anchor



Installation



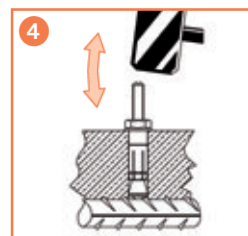
Locate reinforcing bar.



Drill up to the reinforcing bar.



Clean hole.



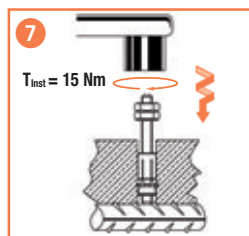
Set anchor.



Apply recommended fastening torque with a calibrated torque wrench.



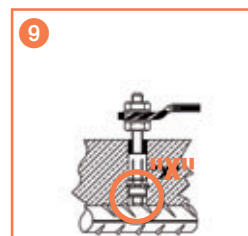
Remove the hex nut, washer and distance sleeve.



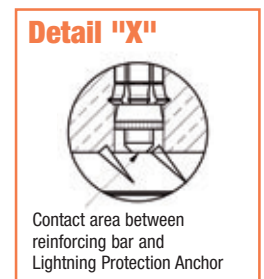
Screw in the threaded stud until in contact with the reinforcing bar.



Fill annular gap completely with injection mortar.



Attach grounding lug.



Contact area between reinforcing bar and Lightning Protection Anchor